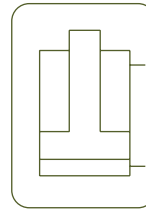


## ALUMINIUM DOUBLE ACTING CYLINDERS



- ✓ Capacity from 50 to 200 Tn, stroke up to 300 mm.
- ✓ Made out of high strength aluminium alloy.
- ✓ All aluminium parts are treated to improve resistance and extend working life.
- ✓ Lightweight. Over 40% weight reduction when compared with steel equivalent.
- ✓ Fitted with steel base plate and saddle for wear resistance.
- ✓ Internal safety valve to prevent accidental over-pressure.
- ✓ Not suitable for high cycle applications.

Performance under Pressure



Larzep designs and manufactures special cylinders and fixing systems. For further information, please contact our Internal Sales department.



Step by step aluminium cylinders. Stage lifting.



ALUM. DOUBLE ACTING CYLINDERS



|               |             |
|---------------|-------------|
| Type          | <b>DDA</b>  |
| Capacity      | 50 - 200 Tn |
| Stroke        | 50 - 300 mm |
| Max. pressure | 700 bar     |

DDA CYLINDERS

**DDR**  
Double Acting High Tonnage Cylinders



P.60

**D**  
Double Acting Cylinders



P.56

**DAH**  
Aluminium Double Acting  
Hollow Piston Cylinders



P.70

**AZ04**  
Optional Tilting Saddles available



P.118



**HBM / HBE**  
Powerpack



P.88

**Z22107**  
Air Hydraulic Pump

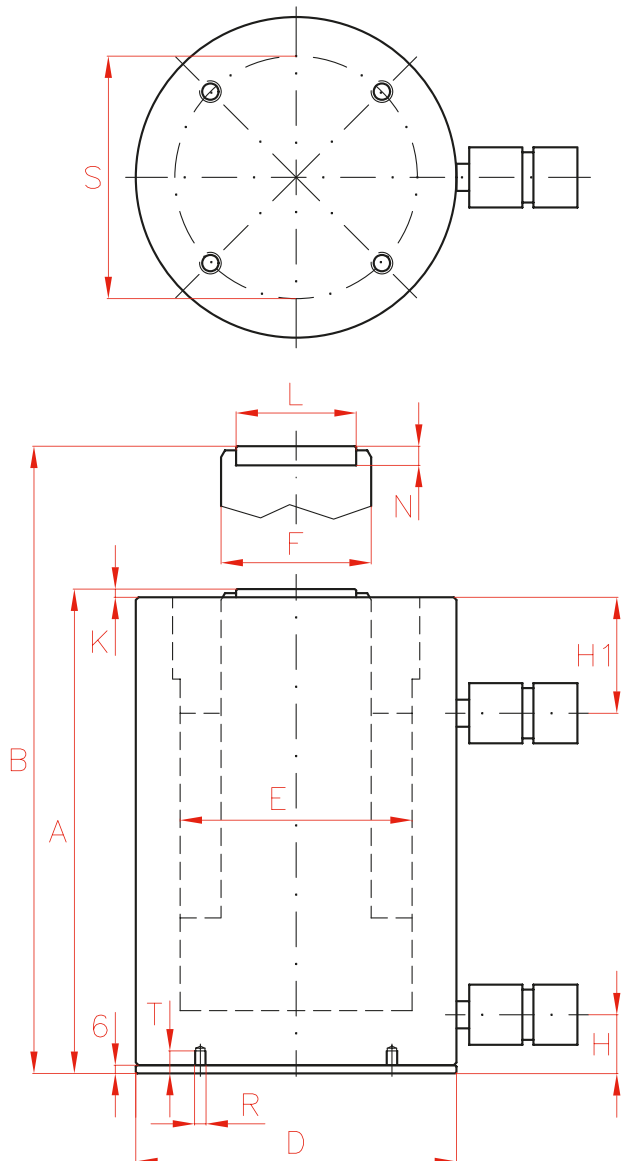


P.86

**X**  
Double Acting Hand Pumps



P.80



| Capacity | Stroke | Model    | Capacity (kN) | Oil Cap.        | A   |  |
|----------|--------|----------|---------------|-----------------|-----|--|
| Tn       | mm     | LARZEP   | Push          | cm <sup>3</sup> | mm  |  |
| 50       | 50     | DDA05005 | 487           | 354             | 198 |  |
|          | 100    | DDA05010 | 487           | 709             | 248 |  |
|          | 150    | DDA05015 | 487           | 1.063           | 298 |  |
|          | 200    | DDA05020 | 487           | 1.418           | 348 |  |
|          | 250    | DDA05025 | 487           | 1.772           | 398 |  |
|          | 300    | DDA05030 | 487           | 2.126           | 448 |  |
| 75       | 50     | DDA07505 | 713           | 520             | 215 |  |
|          | 100    | DDA07510 | 713           | 1.039           | 265 |  |
|          | 150    | DDA07515 | 713           | 1.558           | 315 |  |
|          | 200    | DDA07520 | 713           | 2.077           | 365 |  |
|          | 250    | DDA07525 | 713           | 2.597           | 415 |  |
|          | 300    | DDA07530 | 713           | 3.116           | 465 |  |
| 100      | 50     | DDA10005 | 911           | 664             | 230 |  |
|          | 100    | DDA10010 | 911           | 1.327           | 280 |  |
|          | 150    | DDA10015 | 911           | 1.991           | 330 |  |
|          | 200    | DDA10020 | 911           | 2.655           | 380 |  |
|          | 250    | DDA10025 | 911           | 3.318           | 430 |  |
|          | 300    | DDA10030 | 911           | 3.982           | 480 |  |
| 140      | 50     | DDA14005 | 1.380         | 1.005           | 255 |  |
|          | 100    | DDA14010 | 1.380         | 2.010           | 305 |  |
|          | 150    | DDA14015 | 1.380         | 3.016           | 355 |  |
|          | 200    | DDA14020 | 1.380         | 4.021           | 405 |  |
|          | 250    | DDA14025 | 1.380         | 5.026           | 455 |  |
|          | 300    | DDA14030 | 1.380         | 6.031           | 505 |  |
| 200      | 50     | DDA20005 | 1.946         | 1.418           | 259 |  |
|          | 100    | DDA20010 | 1.946         | 2.835           | 309 |  |
|          | 150    | DDA20015 | 1.946         | 4.253           | 359 |  |
|          | 200    | DDA20020 | 1.946         | 5.670           | 409 |  |
|          | 250    | DDA20025 | 1.946         | 7.088           | 459 |  |
|          | 300    | DDA20030 | 1.946         | 8.506           | 509 |  |

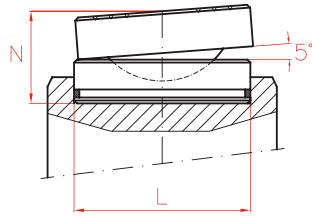


Performance under Pressure

ALUM. DOUBLE ACTING CYLINDERS

OPTIONAL TILTING SADDLES

| Model  | L   | N  | Weight |
|--------|-----|----|--------|
| LARZEP | mm  | mm | kg     |
| AZ0401 | 45  | 36 | 0,4    |
| AZ0402 | 61  | 39 | 0,8    |
| AZ0404 | 88  | 47 | 2,2    |
| AZ0405 | 111 | 52 | 4,0    |



P.118



Type **DDA**

Capacity **50 - 200 Tn**

Stroke **50 - 300 mm**

Max. pressure **700 bar**

DDA CYLINDERS

|  | B   | D   | E   | F   | H  | H1 | K | L   | N  | S   | R  | T  | Area            | Weight | Model    | With tilting saddle |        |
|--|-----|-----|-----|-----|----|----|---|-----|----|-----|----|----|-----------------|--------|----------|---------------------|--------|
|  | mm  | mm  | mm  | mm  | mm | mm |   | mm  | mm | mm  |    | mm | cm <sup>2</sup> | kg     | LARZEP   | A                   | Model  |
|  | 248 | 135 | 95  | 75  | 26 | 60 | 7 | 61  | 12 | 115 | M6 | 19 | 71              | 8,0    | DDA05005 | 225                 | AZ0402 |
|  | 348 | 135 | 95  | 75  | 26 | 60 | 7 | 61  | 12 | 115 | M6 | 19 | 71              | 9,7    | DDA05010 | 275                 | AZ0402 |
|  | 448 | 135 | 95  | 75  | 26 | 60 | 7 | 61  | 12 | 115 | M6 | 19 | 71              | 11,3   | DDA05015 | 325                 | AZ0402 |
|  | 548 | 135 | 95  | 75  | 26 | 60 | 7 | 61  | 12 | 115 | M6 | 19 | 71              | 12,9   | DDA05020 | 375                 | AZ0402 |
|  | 648 | 135 | 95  | 75  | 26 | 60 | 7 | 61  | 12 | 115 | M6 | 19 | 71              | 14,6   | DDA05025 | 425                 | AZ0402 |
|  | 748 | 135 | 95  | 75  | 26 | 60 | 7 | 61  | 12 | 115 | M6 | 19 | 71              | 16,2   | DDA05030 | 475                 | AZ0402 |
|  | 265 | 160 | 115 | 90  | 32 | 70 | 6 | 61  | 12 | 140 | M6 | 19 | 104             | 11,8   | DDA07505 | 242                 | AZ0402 |
|  | 365 | 160 | 115 | 90  | 32 | 70 | 6 | 61  | 12 | 140 | M6 | 19 | 104             | 14,0   | DDA07510 | 292                 | AZ0402 |
|  | 465 | 160 | 115 | 90  | 32 | 70 | 6 | 61  | 12 | 140 | M6 | 19 | 104             | 16,3   | DDA07515 | 342                 | AZ0402 |
|  | 565 | 160 | 115 | 90  | 32 | 70 | 6 | 61  | 12 | 140 | M6 | 19 | 104             | 18,6   | DDA07520 | 392                 | AZ0402 |
|  | 665 | 160 | 115 | 90  | 32 | 70 | 6 | 61  | 12 | 140 | M6 | 19 | 104             | 20,8   | DDA07525 | 442                 | AZ0402 |
|  | 765 | 160 | 115 | 90  | 32 | 70 | 6 | 61  | 12 | 140 | M6 | 19 | 104             | 23,1   | DDA07530 | 492                 | AZ0402 |
|  | 280 | 180 | 130 | 110 | 32 | 70 | 5 | 88  | 14 | 160 | M6 | 19 | 133             | 16,1   | DDA10005 | 263                 | AZ0404 |
|  | 380 | 180 | 130 | 110 | 32 | 70 | 5 | 88  | 14 | 160 | M6 | 19 | 133             | 19,2   | DDA10010 | 313                 | AZ0404 |
|  | 480 | 180 | 130 | 110 | 32 | 70 | 5 | 88  | 14 | 160 | M6 | 19 | 133             | 22,2   | DDA10015 | 363                 | AZ0404 |
|  | 580 | 180 | 130 | 110 | 32 | 70 | 5 | 88  | 14 | 160 | M6 | 19 | 133             | 25,3   | DDA10020 | 413                 | AZ0404 |
|  | 680 | 180 | 130 | 110 | 32 | 70 | 5 | 88  | 14 | 160 | M6 | 19 | 133             | 28,3   | DDA10025 | 463                 | AZ0404 |
|  | 780 | 180 | 130 | 110 | 32 | 70 | 5 | 88  | 14 | 160 | M6 | 19 | 133             | 31,3   | DDA10030 | 513                 | AZ0404 |
|  | 305 | 225 | 160 | 110 | 43 | 85 | 6 | 88  | 14 | 200 | M6 | 19 | 201             | 28,2   | DDA14005 | 288                 | AZ0404 |
|  | 405 | 225 | 160 | 110 | 43 | 85 | 6 | 88  | 14 | 200 | M6 | 19 | 201             | 32,3   | DDA14010 | 338                 | AZ0404 |
|  | 505 | 225 | 160 | 110 | 43 | 85 | 6 | 88  | 14 | 200 | M6 | 19 | 201             | 36,4   | DDA14015 | 388                 | AZ0404 |
|  | 605 | 225 | 160 | 110 | 43 | 85 | 6 | 88  | 14 | 200 | M6 | 19 | 201             | 40,5   | DDA14020 | 438                 | AZ0404 |
|  | 705 | 225 | 160 | 110 | 43 | 85 | 6 | 88  | 14 | 200 | M6 | 19 | 201             | 44,6   | DDA14025 | 488                 | AZ0404 |
|  | 805 | 225 | 160 | 110 | 43 | 85 | 6 | 88  | 14 | 200 | M6 | 19 | 201             | 48,7   | DDA14030 | 538                 | AZ0404 |
|  | 309 | 265 | 190 | 140 | 51 | 85 | 6 | 111 | 15 | 225 | M6 | 19 | 284             | 40,0   | DDA20005 | 296                 | AZ0405 |
|  | 409 | 265 | 190 | 140 | 51 | 85 | 6 | 111 | 15 | 225 | M6 | 19 | 284             | 45,9   | DDA20010 | 346                 | AZ0405 |
|  | 509 | 265 | 190 | 140 | 51 | 85 | 6 | 111 | 15 | 225 | M6 | 19 | 284             | 51,8   | DDA20015 | 396                 | AZ0405 |
|  | 609 | 265 | 190 | 140 | 51 | 85 | 6 | 111 | 15 | 225 | M6 | 19 | 284             | 57,8   | DDA20020 | 446                 | AZ0405 |
|  | 709 | 265 | 190 | 140 | 51 | 85 | 6 | 111 | 15 | 225 | M6 | 19 | 284             | 63,7   | DDA20025 | 496                 | AZ0405 |
|  | 809 | 265 | 190 | 140 | 51 | 85 | 6 | 111 | 15 | 225 | M6 | 19 | 284             | 69,6   | DDA20030 | 546                 | AZ0405 |